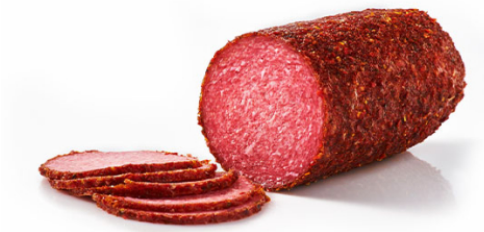




## SALAMI WITH SPRINKLE PAPRIKA

50964207

Pork sausage, finely chopped, raw, smoked, matured. The surface the outside is sprinkled with dried red pepper.



### NUTRITIONAL VALUE OF 100 G OF THE PRODUCT:

|                      |   |
|----------------------|---|
| <b>energy</b>        | <b>1580 kJ/ 381 kcal</b>                    |
| <b>fat</b>           | <b>32 g</b> - of which saturated acids 12 g |
| <b>carbohydrates</b> | <b>5.1 g</b> - of which sugars 1.2 g        |
| <b>protein</b>       | <b>17 g</b>                                 |
| <b>salt</b>          | <b>3.7 g</b>                                |

**PACKAGING:**  
MAP | CA 2600G

**SHELF LIFE:**  
60 DAYS